

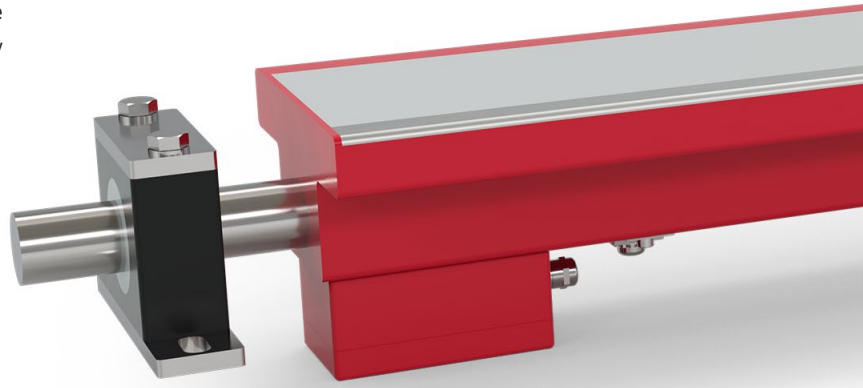


# METRON 05 PR

Plate metal detector for low product heights  
in the textile industry

## Reliable detection of all types of metal

Metal detectors from Mesutronic use state-of-the-art technology to protect your production, your reputation and your customers from damage caused by metallic foreign bodies. Digital signal evaluation combined with innovative evaluation procedures, comprehensive self-monitoring and easy operation ensure the optimal functioning of the system as well as the secure passing of all kinds of audits. The devices are complemented by an extensive range of accessories and variants; from multi-frequency technologies to test specimens and material certificates.



## Durable operation in any application

Our systems are adapted to the application and environment of our customers already in the design phase. This ranges from dusty or salty environments to potentially explosive areas. In addition to professional and customer-oriented product development, we achieve this through the careful processing of high-quality materials, be they steel of suitable quality, various plastics or special sealing materials. The fail-safe storage of system parameters is part of the standard scope of delivery.

## Easy installation and operation

The compact design allows uncomplicated retrofitting, even in confined assembly situations. The predefined standard setups allow operation in most applications without additional settings. At the same time, the clear operating structure allows the storage of further customer-specific programmes and easy handling for all users at all times.



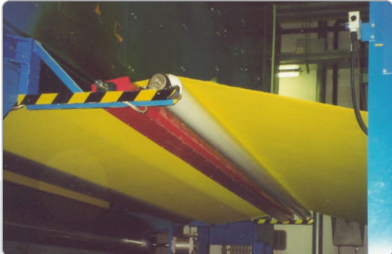
## Safety for the production of textiles

The focus of inspection systems in the textile industry is on process monitoring. Foreign bodies made of iron, brass, aluminium or stainless steel must be removed reliably. This ranges from a brass chip in the fibre transport line to a nut that threatens to damage the calender. These are a critical means of ensuring value creation in production and process quality. They can also provide valuable services in special applications for outgoing goods, for example the testing of non-woven fabrics.



## Your wishes, our task

Solutions tailored to the customer facilitate integration, save costs and reduce introduction barriers, especially with existing product lines. These range from simple flanges for metal separators to specially designed conveyor systems with a width of several metres. We always work in dialogue with our customers in order to ensure a result that is reliable and as economical as possible. This is made possible by our competent team of employees. The essence of Mesutronic is its high affinity for creative solutions in all areas, from sales to application, mechanical and electronic development, up to production and after-sales. It is supported by modern work equipment and a process world embedded in ISO 9001.



## Ready for the future? We say: Yes!

Depending on the type of electronics used, our systems can already be connected as standard via analogue signals, various bus systems or Ethernet to PLCs, process control systems or other machines in the line. With digital networking the OPC UA protocol, in addition to other protocols, is used here for the smooth transmission of operating conditions and production-critical values. Depending on the system, these basic functions can be supplemented with the mesuLINK network software, the mesuREMOTE remote maintenance tool or the mesuEXPORT reporting feature to allow full use of the potential of digitization and Industry 4.0.



### No compromises, always there for you


During the entire life cycle of the inspection system, from project planning to commissioning, the productive phase until a fault occurs, a professional, agile and attentive service team decides on the ultimate effectiveness of the inspection programme installed by the customer. At Mesutronic, the customer is at the heart of everything we do in all these phases. This starts with a system concept that places functionality above yields and ends with an after-sales service for fast, reliable help that comes as standard. Our training offer is tailored to your needs and increases the competence of every level of personnel that comes into contact with our systems.




**Headquarter  
Germany**

 **Mesutronic GmbH**  
Hackenfeld 13  
94259 Kirchberg im Wald  
Germany

 +49 9927 9410 0  
 sales@mesutronic.de  
www.mesutronic.de



**Sales and service  
USA**

 **Mesutronic Inc.**  
4502 Southmark Dr.  
Salisbury, NC 28147  
USA

 +1 980 265 4015  
 info@mesutronic.us  
www.mesutronic.us



**Sales and service  
France**

 **Mesutronic France SAS**  
11, rue de Mittlerweg  
F-68000 Colmar  
France

 +33 03 89 20 43 98  
 contact@mesutronic.fr  
www.mesutronic.fr



You can find further international partners  
on our website at [www.mesutronic.de/en/contact/](http://www.mesutronic.de/en/contact/)