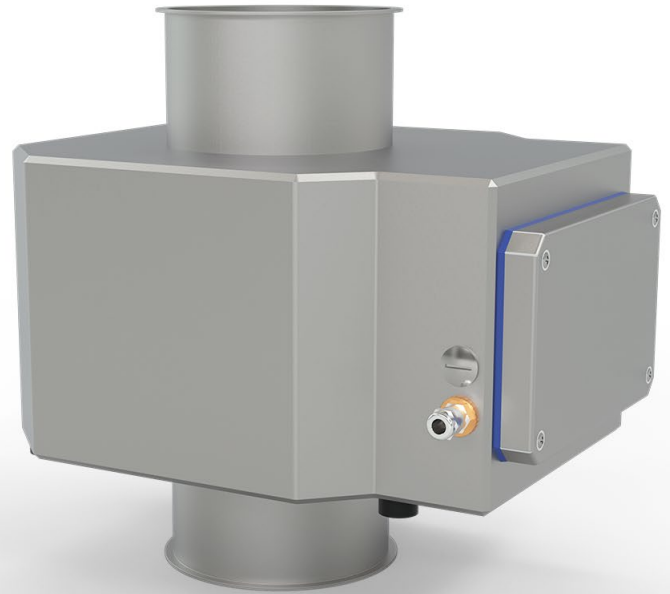


METRON 07 PW

Round metal detector for assembly in pipelines
in the hygiene industry

Reliable detection of all types of metal

Metal detectors from Mesutronic use state-of-the-art technology to protect your production, your reputation and your customers from damage caused by metallic foreign bodies. Digital signal evaluation combined with innovative evaluation procedures, comprehensive self-monitoring and easy operation ensure the optimal functioning of the system as well as the secure passing of all kinds of audits. The devices are complemented by an extensive range of accessories and variants; from multi-frequency technologies to test specimens and material certificates.



Durable operation in any application

Our systems are adapted to the application and environment of our customers already in the design phase. This ranges from cleaning conditions with high-pressure cleaners, to dust- or salt-laden environments and potentially explosive areas. In addition to professional and customer-oriented product development, we achieve this through the careful processing of high-quality materials, be they stainless steels of suitable quality, various plastics or special sealing materials.

Conformity to standards and directives.

One of the most important criteria for the successful installation of an inspection system is ensuring compliance with the requirements of legislation, trade organizations and management. On the software side, standard features such as password-protected user management, automatic test requests or various reporting options provide valuable services. The sophisticated structure of our devices ensures compliance with the relevant hygiene guidelines.

A screenshot of a password entry interface on a device screen. The interface is titled "Passworteingabe für Benutzer: User". Below the title, there is a password field containing four black dots. Below the password field is a numeric keypad with buttons for digits 1-0. Below the numeric keypad is a QWERTY keyboard with buttons for letters q-p, a-l, and y-m. There are also navigation buttons for left, right, and up. At the bottom, there is a checkbox labeled "Zeichen ausblenden" (Hide characters) which is checked. Below the checkbox are two buttons: "Abbrechen" (Cancel) with a red 'X' icon and "OK" with a green checkmark icon.

Safety for the production of hygiene articles

The focus of inspection systems in the investigation of napkins, sanitary towels or cotton pads is on monitoring outgoing goods. Foreign bodies made of metal, glass or stone must be removed reliably, and other quality defects must be reduced as much as possible. This ranges from a piece of glass shards in make-up removal pads to a chip of metal in a tampon. These are a critical means of meeting stringent quality guidelines. For incoming goods and production, they reduce costs and increase process reliability - for example, by monitoring raw materials such as non-woven fabrics or protecting cutting machines.



Your wishes, our task

Solutions tailored to the customer facilitate integration, save costs and reduce introduction barriers, especially with existing product lines. These range from simple flanges for metal separators to specially designed conveyor systems with a width of several metres. We always work in dialogue with our customers in order to ensure a result that is reliable and as economical as possible. This is made possible by our competent team of employees. The essence of Mesutronic is its high affinity for creative solutions in all areas, from sales to application, mechanical and electronic development, up to production and after-sales. It is supported by modern work equipment and a process world embedded in ISO 9001.



Ready for the future? We say: Yes!

Depending on the type of electronics used, our systems can already be connected as standard via analogue signals, various bus systems or Ethernet to PLCs, process control systems or other machines in the line. With digital networking the OPC UA protocol, in addition to other protocols, is used here for the smooth transmission of operating conditions and production-critical values. Depending on the system, these basic functions can be supplemented with the mesuLINK network software, the mesuREMOTE remote maintenance tool or the mesuEXPORT reporting feature to allow full use of the potential of digitization and Industry 4.0.



No compromises, always there for you

During the entire life cycle of the inspection system, from project planning to commissioning, the productive phase until a fault occurs, a professional, agile and attentive service team decides on the ultimate effectiveness of the inspection programme installed by the customer. At Mesutronic, the customer is at the heart of everything we do in all these phases. This starts with a system concept that places functionality above yields and ends with an after-sales service for fast, reliable help that comes as standard. Our training offer is tailored to your needs and increases the competence of every level of personnel that comes into contact with our systems.



Headquarter Germany

📍 **Mesutronic GmbH**
Hackenfeld 13
94259 Kirchberg im Wald
Germany

☎ +49 9927 9410 0
✉ sales@mesutronic.de
www.mesutronic.de



Sales and service USA

📍 **Mesutronic Inc.**
4502 Southmark Dr.
Salisbury, NC 28147
USA

☎ +1 980 265 4015
✉ info@mesutronic.us
www.mesutronic.us



Sales and service France

📍 **Mesutronic France SAS**
11, rue de Mittlerweg
F-68000 Colmar
France

☎ +33 03 89 20 43 98
✉ contact@mesutronic.fr
www.mesutronic.fr



You can find further international partners
on our website at www.mesutronic.de/en/contact/